

Background

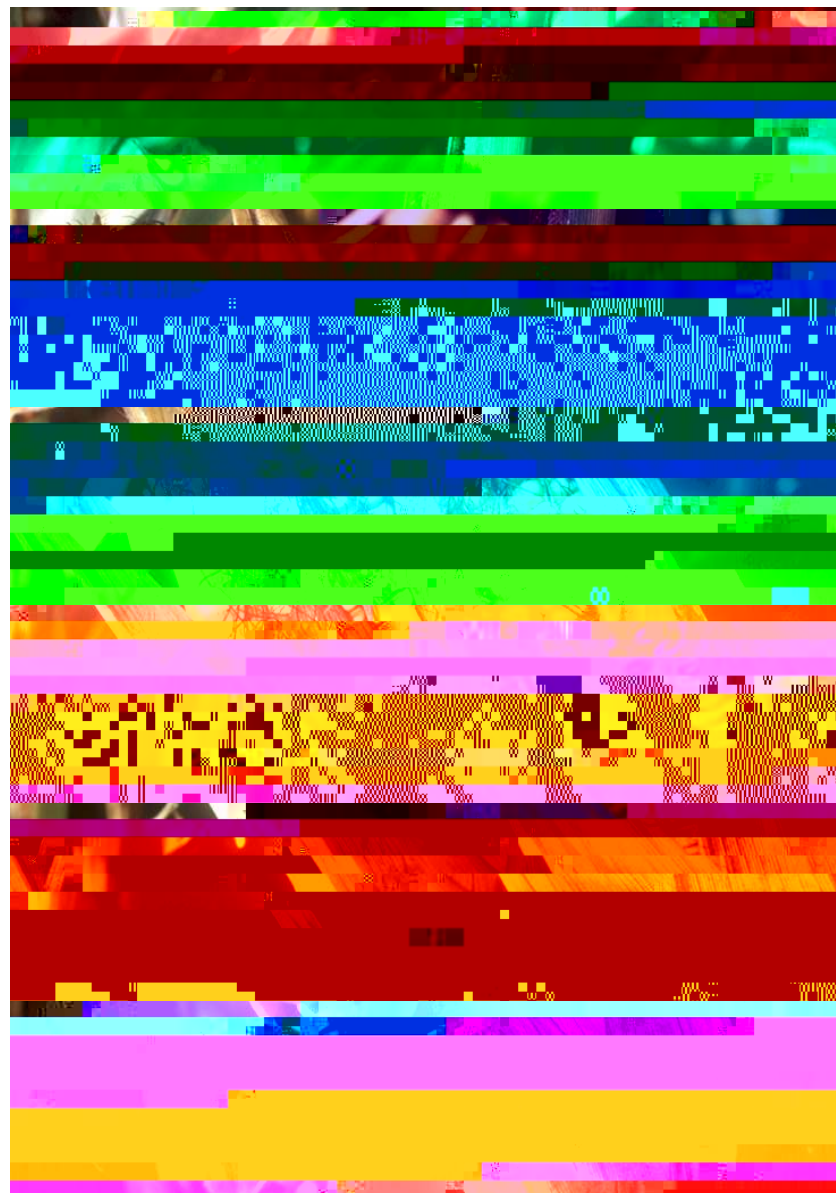
Ten Keys to Increased Corn Yield and Profitability for 2006

Objectives

- To provide guidelines for corn hybrid maturity recommendations.

Questions

- Why is maturity important?
- What is it for your farm (field)?



Materials and Methods



1. β

Calculating Grower Return

It all boils down to economics (drying cost) ...

Method for Determining Wisconsin Relative Maturity

GRM = Grain Relative Maturity, SRM = Silage Relative Maturity



•

9

