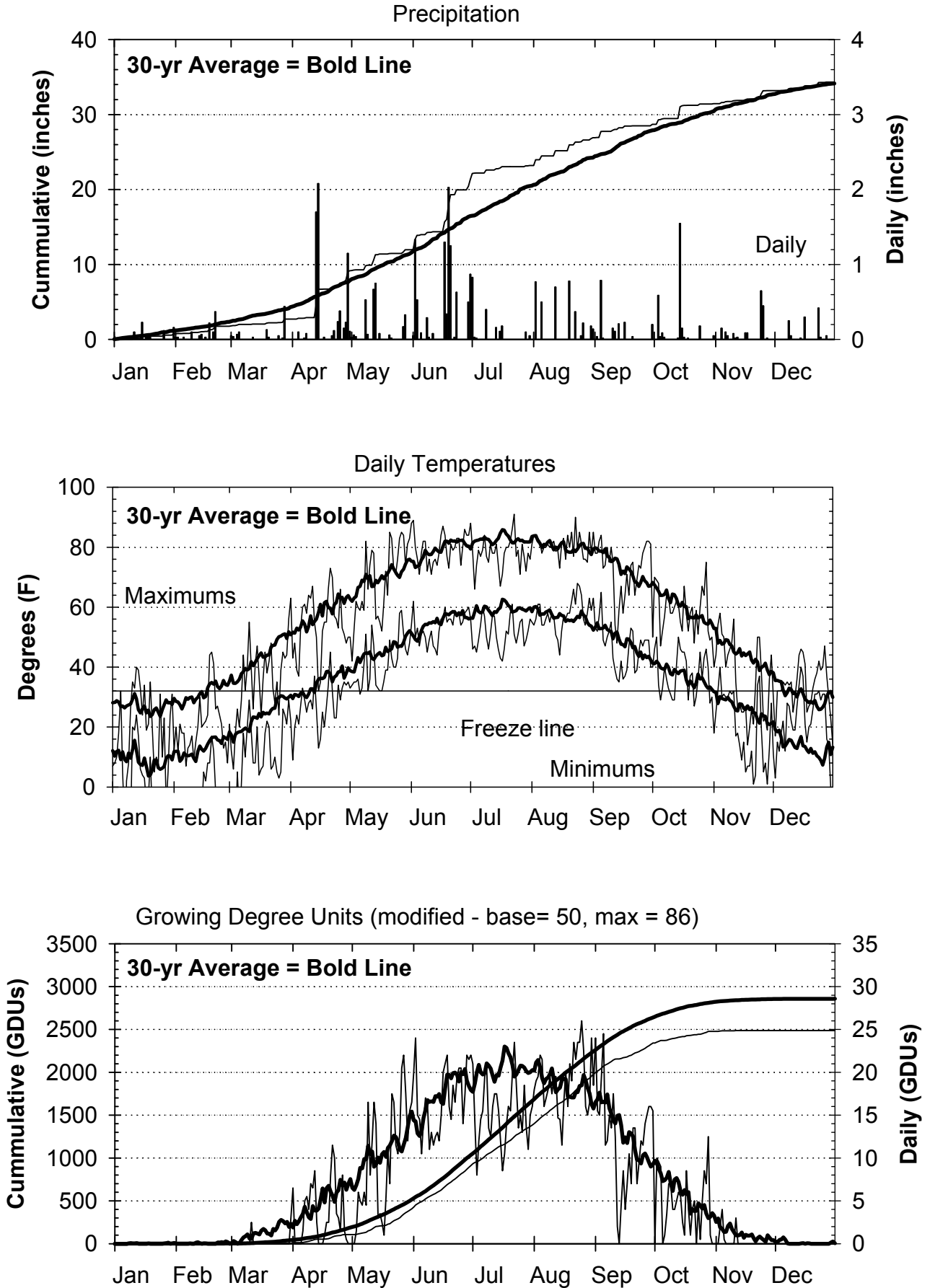


2014 Weather Summary for Arlington, WI



Source: Bill Bland (AWON, UW-Soils) and the Midwest Region Climatological Center.

Table A-1. Daily Precipitation, Solar Radiation, Soil and Air Temperatures and Growing Degree Units at the Arlington Research Station.

Day of year		Precipitation		Daily Solar Radiation	Soil Temperature		Air Temperature		Growing Degree Units (86/50 °F)	
					at 2 inches		Max	Min	Max	Min
		Daily	Total	W m ⁻²	Max	Min	Max	Min	Daily	Total
		inches			°F		°F			
91	1-Apr	0.00	2.7	149	51	33	63	22	7	12
92	2-Apr	0.00	2.7	244	64	33	43	9	0	12
93	3-Apr	0.00	2.7	56	43	34	48	20	0	12
94	4-Apr	0.10	2.8	57	43	34	39	24	0	12
95	5-Apr	0.00	2.8	271	67	33	37	21	0	12
96	6-Apr	0.00	2.8	215	66	34	53	27	2	14
97	7-Apr	0.02	2.9	154	74	38	60	33	5	19
98	8-Apr	0.08	2.9	211	66	35	61	29	6	24
99	9-Apr	0.00	2.9	259	69	34	58	25	4	28
100	10-Apr	0.00	2.9	192	63	37	64	28	7	35
101	11-Apr	0.00	2.9	194	66	34	63	29	7	42
102	12-Apr	0.00	2.9	85	64	38	67	26	9	50
103	13-Apr	1.70	4.6	51	58	44	55	37	3	53
104	14-Apr	2.08	6.7	91	45	34	50	26	0	53
105	15-Apr	0.00	6.7	234	55	31	32	13	0	53
106	16-Apr	0.00	6.7	208	59	33	35	16	0	53
107	17-Apr	0.03	6.7	163	69	35	52	25	1	54
108	18-Apr	0.00	6.7	292	77	34	55	20	3	56
109	19-Apr	0.00	6.7	257	71	34	55	27	3	59
110	20-Apr	0.00	6.7	131	78	47	66	34	8	67
111	21-Apr	0.05	6.8	126	78	46	73	45	12	78
112	22-Apr	0.12	6.9	302	69	36	70	32	10	88
113	23-Apr	0.00	6.9	222	75	34	57	23	4	92
114	24-Apr	0.24	7.2	53	56	39	56	23	3	95
115	25-Apr	0.38	7.5	275	77	43	53	34	2	96
116	26-Apr	0.00	7.5	267	71	37	66	29	8	104
117	27-Apr	0.15	7.7	102	57	42	53	33	2	106
118	28-Apr	0.23	7.9	36	50	44	51	35	1	106
119	29-Apr	1.15	9.1	48	55	43	48	34	0	106
120	30-Apr	0.11	9.2	86	63	44	50	35	0	106
121	1-May	0.03	9.2	85	63	43	50	33	0	106
122	2-May	0.06	9.3	76	62	43	42	34	0	106
123	3-May	0.04	9.3	286	70	42	53	35	2	108
124	4-May	0.00	9.3	274	79	40	62	35	6	114
125	5-May	0.00	9.3	255	75	43	60	36	5	119
126	6-May	0.00	9.3	275	79	39	59	31	5	123
127	7-May	0.00	9.3	109	66	49	62	33	6	129
128	8-May	0.53	9.8	133	81	50	59	41	5	134
129	9-May	0.07	9.9	192	78	47	82	51	17	150
130	10-May	0.00	9.9	290	94	44	66	32	8	158
131	11-May	0.00	9.9	190	96	53	74	36	12	170
132	12-May	0.67	10.6	102	86	65	79	54	17	187
133	13-May	0.75	11.3	77	69	49	78	47	14	201
134	14-May	0.00	11.3	204	74	45	56	34	3	204
135	15-May	0.08	11.4	180	77	46	57	33	4	207
136	16-May	0.00	11.4	193	76	45	55	32	3	210
137	17-May	0.00	11.4	256	77	39	52	32	1	211
138	18-May	0.00	11.4	303	93	42	61	35	6	216
139	19-May	0.00	11.4	98	67	48	72	39	11	227
140	20-May	0.06	11.5	263	100	57	64	39	7	234
141	21-May	0.02	11.5	310	102	60	85	49	18	252
142	22-May	0.00	11.5	298	99	54	83	43	17	268
143	23-May	0.00	11.5	326	103	53	73	40	12	280
144	24-May	0.00	11.5	290	105	53	71	40	11	290

Table A-1. Daily Precipitation, Solar Radiation, Soil and Air Temperatures and Growing Degree Units at the Arlington Research Station.

Day of year	Precipitation		Daily Solar Radiation	Soil Temperature		Air Temperature		Growing Degree Units (86/50 °F)	
	Daily	Total		at 2 inches		Max	Min	Daily	Total
	inches		W m ⁻²	°F		°F			
145 25-May	0.00	11.5	314	109	55	76	43	13	303
146 26-May	0.00	11.5	170	99	71	83	58	21	324
147 27-May	0.17	11.7	209	103	70	85	59	22	346
148 28-May	0.33	12.0	265	95	62	84	51	18	363
149 29-May	0.00	12.0	329	106	58	74	46	12	375
150 30-May	0.00	12.0	334	112	59	81	44	16	391
151 31-May	0.00	12.0	314	111	62	83	48	17	407
152 1-Jun	0.05	12.0	184	103	73	88	54	20	427
153 2-Jun	1.33	13.4	212	93	69	89	62	24	451
154 3-Jun	0.53	13.9	319	96	64	80	50	15	466
155 4-Jun	0.00	13.9	151	94	63	76	53	15	481
156 5-Jun	0.09	14.0	307	104	59	71	47	11	491
157 6-Jun	0.00	14.0	310	111	66	78	51	15	506
158 7-Jun	0.00	14.0	195	103	65	82	52	17	523
159 8-Jun	0.29	14.3	297	100	63	82	50	16	539
160 9-Jun	0.03	14.3	271	108	58	72	45	11	550
161 10-Jun	0.00	14.3	123	88	66	76	49	13	563
162 11-Jun	0.08	14.4	189	102	65	71	52	12	574
163 12-Jun	0.00	14.4	253	102	62	75	47	13	587
164 13-Jun	0.00	14.4	346	106	58	76	46	13	600
165 14-Jun	0.00	14.4	300	110	62	74	44	12	612
166 15-Jun	0.00	14.4	207	105	68	78	52	15	627
167 16-Jun	0.00	14.4	294	116	65	84	56	20	647
168 17-Jun	1.30	15.7	267	107	75	87	56	21	668
169 18-Jun	0.34	16.0	149	101	74	84	60	22	690
170 19-Jun	2.03	18.1	122	95	74	77	55	16	706
171 20-Jun	1.25	19.3	220	105	76	73	56	15	720
172 21-Jun	0.00	19.3	141	94	74	81	56	19	739
173 22-Jun	0.03	19.3	247	106	69	79	54	17	755
174 23-Jun	0.63	20.0	287	112	75	80	59	20	775
175 24-Jun	0.00	20.0	295	110	73	83	58	21	795
176 25-Jun	0.00	20.0	145	98	73	83	58	21	816
177 26-Jun	0.00	20.0	272	115	72	74	54	14	830
178 27-Jun	0.00	20.0	281	115	73	80	55	18	847
179 28-Jun	0.00	20.0	252	116	78	86	58	22	869
180 29-Jun	0.50	20.5	262	100	77	84	59	22	891
181 30-Jun	0.87	21.3	158	106	75	84	60	22	913
182 1-Jul	0.83	22.2	287	102	72	88	56	21	934
183 2-Jul	0.03	22.2	111	84	66	78	46	14	948
184 3-Jul	0.02	22.2	324	102	58	66	47	8	956
185 4-Jul	0.00	22.2	334	116	63	74	45	12	968
186 5-Jul	0.00	22.2	249	106	66	79	49	15	982
187 6-Jul	0.00	22.2	106	98	75	77	54	16	998
188 7-Jul	0.00	22.2	281	119	72	79	60	20	1017
189 8-Jul	0.40	22.6	271	100	70	84	57	21	1038
190 9-Jul	0.00	22.6	304	110	67	77	50	14	1051
191 10-Jul	0.00	22.6	304	118	63	75	46	13	1064
192 11-Jul	0.00	22.6	187	104	71	81	51	16	1080
193 12-Jul	0.00	22.6	89	95	74	78	57	18	1097
194 13-Jul	0.16	22.8	279	110	69	78	57	18	1115
195 14-Jul	0.00	22.8	266	114	65	81	50	16	1130
196 15-Jul	0.11	22.9	166	93	61	74	46	12	1142
197 16-Jul	0.18	23.1	289	101	57	67	43	9	1151
198 17-Jul	0.00	23.1	293	113	58	71	42	11	1161

Table A-1. Daily Precipitation, Solar Radiation, Soil and Air Temperatures and Growing Degree Units at the Arlington Research Station.

Day of year	<u>Precipitation</u>		Daily Solar Radiation W m ⁻²	<u>Soil Temperature</u> at 2 inches		<u>Air</u> Temperature		<u>Growing Degree</u> Units (86/50 °F)		
	Daily	Total		Max	Min	Max	Min	Daily	Total	
	inches			°F		°F				
199	18-Jul	0.00	23.1	243	114	64	78	46	14	1175
200	19-Jul	0.00	23.1	265	116	66	80	52	16	1191
201	20-Jul	0.00	23.1	263	117	68	80	51	16	1207
202	21-Jul	0.00	23.1	292	121	73	82	58	20	1227
203	22-Jul	0.00	23.1	265	127	81	86	61	24	1250
204	23-Jul	0.00	23.1	283	122	71	91	51	19	1269
205	24-Jul	0.00	23.1	293	126	68	77	48	14	1282
206	25-Jul	0.00	23.1	81	93	73	79	51	15	1297
207	26-Jul	0.00	23.1	168	118	73	71	55	13	1310
208	27-Jul	0.00	23.1	256	118	69	81	56	19	1329
209	28-Jul	0.10	23.2	254	104	62	77	47	14	1342
210	29-Jul	0.00	23.2	263	114	66	72	49	11	1353
211	30-Jul	0.05	23.2	276	120	66	78	52	15	1368
212	31-Jul	0.00	23.2	249	120	69	76	56	16	1384
213	1-Aug	0.00	23.2	241	125	68	81	55	18	1402
214	2-Aug	0.77	24.0	272	121	66	84	54	19	1421
215	3-Aug	0.00	24.0	240	126	71	83	56	20	1441
216	4-Aug	0.00	24.0	119	112	74	83	61	22	1463
217	5-Aug	0.50	24.5	158	103	69	82	61	22	1484
218	6-Aug	0.00	24.5	250	114	65	78	54	16	1500
219	7-Aug	0.00	24.5	274	119	65	80	54	17	1517
220	8-Aug	0.00	24.5	279	120	67	80	56	18	1535
221	9-Aug	0.00	24.5	269	121	68	81	58	20	1555
222	10-Aug	0.00	24.5	227	125	68	80	55	18	1572
223	11-Aug	0.00	24.5	198	124	70	81	58	20	1592
224	12-Aug	0.70	25.2	206	102	63	82	57	20	1611
225	13-Aug	0.00	25.2	241	115	61	79	51	15	1626
226	14-Aug	0.00	25.2	278	118	57	79	49	15	1640
227	15-Aug	0.00	25.2	249	122	55	73	44	12	1652
228	16-Aug	0.00	25.2	241	123	64	81	52	17	1668
229	17-Aug	0.00	25.2	227	119	71	83	57	20	1688
230	18-Aug	0.00	25.2	211	119	68	76	56	16	1704
231	19-Aug	0.78	26.0	222	104	68	84	58	21	1725
232	20-Aug	0.00	26.0	242	118	64	80	58	19	1744
233	21-Aug	0.00	26.0	69	89	73	85	62	24	1768
234	22-Aug	0.37	26.3	200	109	74	77	66	22	1789
235	23-Aug	0.00	26.3	62	88	74	90	61	24	1813
236	24-Aug	0.00	26.3	182	111	74	79	68	24	1836
237	25-Aug	0.05	26.4	85	94	70	85	67	26	1862
238	26-Aug	0.22	26.6	202	104	67	81	64	23	1885
239	27-Aug	0.00	26.6	211	112	62	76	56	16	1901
240	28-Aug	0.00	26.6	171	106	59	76	54	15	1916
241	29-Aug	0.00	26.6	208	114	67	75	58	17	1932
242	30-Aug	0.18	26.8	154	98	68	85	63	24	1956
243	31-Aug	0.14	26.9	231	106	65	78	59	19	1975
244	1-Sep	0.00	26.9	110	96	64	85	63	24	1999
245	2-Sep	0.04	27.0	203	110	56	78	53	16	2014
246	3-Sep	0.00	27.0	251	113	56	78	52	15	2029
247	4-Sep	0.79	27.8	166	91	70	82	57	20	2049
248	5-Sep	0.02	27.8	147	96	60	84	65	25	2073
249	6-Sep	0.00	27.8	250	109	52	73	49	12	2085
250	7-Sep	0.00	27.8	231	117	53	74	47	12	2097
251	8-Sep	0.00	27.8	187	102	54	80	50	15	2112
252	9-Sep	0.00	27.8	199	110	58	75	52	14	2125

Table A-1. Daily Precipitation, Solar Radiation, Soil and Air Temperatures and Growing Degree Units at the Arlington Research Station.

Day of year	Precipitation		Daily Solar Radiation	Soil Temperature at 2 inches		Air Temperature		Growing Degree Units (86/50 °F)		
	Daily	Total		Max	Min	Max	Min	Daily	Total	
	inches		W m ⁻²	°F		°F				
253	10-Sep	0.15	27.9	68	91	51	80	55	18	2143
254	11-Sep	0.11	28.0	80	68	48	75	43	13	2155
255	12-Sep	0.00	28.0	52	60	42	54	39	2	2157
256	13-Sep	0.21	28.2	210	85	38	48	36	0	2157
257	14-Sep	0.00	28.2	214	84	41	59	35	5	2162
258	15-Sep	0.00	28.2	69	73	42	67	42	9	2170
259	16-Sep	0.23	28.5	230	87	37	58	36	4	2174
260	17-Sep	0.00	28.5	218	91	40	64	37	7	2181
261	18-Sep	0.00	28.5	119	82	48	71	39	11	2192
262	19-Sep	0.00	28.5	205	75	50	64	47	7	2199
263	20-Sep	0.04	28.5	119	79	59	74	53	14	2212
264	21-Sep	0.00	28.5	164	76	43	75	52	14	2226
265	22-Sep	0.00	28.5	217	90	39	64	38	7	2233
266	23-Sep	0.00	28.5	213	105	43	69	39	10	2242
267	24-Sep	0.00	28.5	136	101	44	74	45	12	2254
268	25-Sep	0.00	28.5	203	111	48	73	49	12	2266
269	26-Sep	0.00	28.5	200	113	45	78	47	14	2280
270	27-Sep	0.00	28.5	183	115	50	80	49	15	2295
271	28-Sep	0.00	28.5	188	117	50	82	49	16	2311
272	29-Sep	0.00	28.5	165	121	51	82	49	16	2327
273	30-Sep	0.20	28.7	58	64	40	81	40	16	2342
274	1-Oct	0.00	28.7	136	95	49	50	40	0	2342
275	2-Oct	0.00	28.7	50	83	54	70	46	10	2352
276	3-Oct	0.59	29.3	51	64	39	69	50	10	2362
277	4-Oct	0.04	29.3	56	58	33	68	34	9	2371
278	5-Oct	0.09	29.4	139	80	30	47	29	0	2371
279	6-Oct	0.03	29.5	172	93	39	52	33	1	2372
280	7-Oct	0.00	29.5	128	91	37	57	40	4	2375
281	8-Oct	0.00	29.5	188	94	33	64	36	7	2382
282	9-Oct	0.00	29.5	186	96	31	64	33	7	2389
283	10-Oct	0.00	29.5	182	95	29	58	31	4	2393
284	11-Oct	0.00	29.5	183	96	27	58	29	4	2397
285	12-Oct	0.00	29.5	150	92	28	60	29	5	2402
286	13-Oct	0.02	29.5	36	68	51	62	40	6	2408
287	14-Oct	1.55	31.0	12	59	49	61	50	6	2414
288	15-Oct	0.15	31.2	35	57	48	55	46	3	2416
289	16-Oct	0.03	31.2	137	87	46	52	45	1	2417
290	17-Oct	0.00	31.2	25	61	43	67	45	9	2426
291	18-Oct	0.02	31.2	110	74	32	58	42	4	2430
292	19-Oct	0.00	31.2	115	69	30	52	29	1	2431
293	20-Oct	0.00	31.2	108	80	37	58	37	4	2435
294	21-Oct	0.00	31.2	65	60	29	60	38	5	2440
295	22-Oct	0.00	31.2	161	82	29	48	27	0	2440
296	23-Oct	0.00	31.2	33	53	32	59	30	5	2444
297	24-Oct	0.18	31.4	80	77	48	51	36	1	2445
298	25-Oct	0.00	31.4	152	84	38	60	45	5	2450
299	26-Oct	0.00	31.4	150	87	31	67	36	9	2458
300	27-Oct	0.00	31.4	104	89	44	64	43	7	2465
301	28-Oct	0.00	31.4	90	79	41	75	46	13	2478
302	29-Oct	0.00	31.4	84	79	30	52	40	1	2479
303	30-Oct	0.00	31.4	61	68	30	49	28	0	2479
304	31-Oct	0.05	31.5	108	64	24	50	30	0	2479

Table A-2. Monthly and total precipitation (inches) data for the Arlington Research Station.

Year	Jan	Feb	Mar	Apr	May	June	July	Aug	Sep	Oct	Nov	Dec	Annual
1985	1.4	1.8	2.1	2.4	2.8	3.5	5.9	3.6	6.9	3.0	5.3	1.4	40.1
1986	1.2	1.0	1.5	2.7	2.1	4.2	4.6	4.9	10.7	1.9	1.3	0.5	36.7
1987	0.5	0.0	1.9	2.6	4.7	0.6	4.0	4.9	4.9	1.6	4.9	1.4	32.2
1988	2.1	1.0	1.3	3.3	1.0	1.5	1.6	2.9	3.9	2.2	1.5	1.2	23.4
1989	0.7	0.9	1.5	1.4	1.8	2.0	3.8	4.3	3.8	2.4	1.3	0.5	24.3
1990	1.8	0.9	3.7	2.5	4.3	6.3	1.6	5.4	1.2	2.3	1.7	2.4	34.2
1991	1.0	0.4	3.0	4.5	1.9	2.6	3.8	1.8	4.7	6.8	3.6	1.4	35.4
1992	0.5	1.6	1.7	4.0	1.2	1.2	5.8	1.9	7.5	1.3	5.2	2.8	34.6
1993	1.6	1.0	2.3	7.1	4.5	6.1	9.4	3.2	4.2	1.2	1.6	0.2	42.3
1994	0.9	2.0	0.1	2.3	2.0	7.9	6.1	4.0	4.7	0.5	2.8	0.8	34.0
1995	1.3	0.1	2.2	3.4	6.0	2.2	2.8	5.0	1.8	4.2	2.4	0.7	31.9
1996	1.8	0.5	0.3	2.6	3.2	7.8	2.4	2.8	0.9	3.3	0.8	1.6	28.0
1997	0.7	2.8	2.2	2.0	3.3	4.9	6.3	3.2	1.6	1.4	1.0	0.8	30.0
1998	1.2	0.9	3.3	4.0	4.1	6.8	2.1	6.7	3.0	3.4	1.6	0.3	37.4
1999	2.8	1.2	0.6	6.0	3.9	5.3	3.4	2.5	1.4	1.4	1.3	1.0	30.9
2000	1.0	2.3	1.4	3.4	10.5	7.2	3.4	3.3	3.1	0.7	1.5	1.5	39.3
2001	0.8	1.4	0.4	3.1	4.7	7.0	2.9	5.3	5.2	1.7	1.7	1.4	35.8
2002	0.5	1.1	0.8	3.4	3.2	4.3	2.9	3.7	1.9	4.0	2.1	0.6	28.7
2003	0.4	0.2	1.4	2.2	3.8	3.3	3.3	1.8	4.0	1.3	5.3	1.9	28.9
2004	0.3	1.2	2.7	1.9	10.3	4.1	4.3	3.0	0.5	3.3	1.6	1.6	34.8
2005	1.5	1.2	1.8	0.8	3.4	1.5	4.4	3.1	4.7	0.6	3.8	1.0	27.6
2006	1.6	0.6	2.1	5.1	4.3	4.5	4.1	6.1	5.4	3.2	1.7	0.9	39.6
2007	0.5	1.5	3.2	3.3	1.2	3.3	2.9	11.3	2.8	2.3	0.5	3.3	36.3
2008	2.9	2.6	2.8	9.3	3.3	13.8	5.1	1.9	1.6	3.4	1.3	1.8	49.8
2009	0.4	1.7	4.8	4.3	3.6	4.3	2.3	3.2	2.4	4.6	1.3	2.8	35.5
2010	1.7	1.1	1.0	3.7	4.2	7.6	9.3	4.7	4.5	1.7	1.4	1.7	42.5
2011	0.6	0.7	3.4	3.5	1.6	4.1	2.5	1.5	3.9	1.6	3.3	2.4	28.9
2012	0.8	1.0	2.5	3.1	2.9	0.3	4.3	2.9	1.0	4.0	1.1	2.5	26.3
2013	2.3	1.9	2.4	5.4	6.0	7.5	3.0	1.8	3.0	1.5	2.6	1.1	38.5
2014	0.7	1.0	1.0	6.4	2.8	9.3	1.9	3.7	1.8	2.7	1.7	1.1	34.3
30-year Average	1.2	1.2	2.0	3.7	3.8	4.8	4.0	3.8	3.6	2.4	2.2	1.4	34.1

Table A-3. Average monthly and annual temperature (°F) data for the Arlington Research Station.

Year	Jan	Feb	Mar	Apr	May	June	July	Aug	Sep	Oct	Nov	Dec	Annual
1985	12	17	38	52	62	64	71	66	62	50	32	12	45
1986	18	19	36	50	59	66	72	64	62	51	32	25	46
1987	23	31	38	51	61	71	74	68	62	45	40	27	49
1988	13	18	35	47	63	72	75	75	64	45	37	24	47
1989	28	15	30	46	57	66	73	70	60	51	33	13	45
1990	28	26	37	49	55	68	70	69	64	49	40	21	48
1991	14	26	36	50	63	70	71	70	59	49	29	24	47
1992	24	28	33	43	58	64	66	64	59	47	31	22	45
1993	19	19	29	42	57	64	69	69	55	46	33	23	44
1994	6	13	33	46	56	68	67	67	64	53	40	28	45
1995	20	23	37	44	57	72	73	76	60	52	29	21	47
1996	16	22	29	44	55	68	69	70	62	51	30	23	45
1997	17	24	33	42	51	68	69	65	61	50	32	27	45
1998	23	33	33	48	62	66	71	71	65	51	39	30	50
1999	15	30	35	48	60	68	75	67	59	48	43	25	48
2000	20	29	41	45	61	65	69	71	62	54	34	10	47
2001	20	17	30	51	59	67	72	71	59	48	46	31	48
2002	26	27	29	46	54	69	75	70	64	44	34	27	47
2003	17	17	32	44	56	66	71	72	61	49	35	28	46
2004	14	22	37	47	56	65	69	64	65	50	39	24	46
2005	17	27	30	50	54	72	73	70	65	50	36	17	47
2006	29	21	34	50	57	66	73	69	58	44	38	29	48
2007	21	13	37	43	60	68	70	70	62	53	33	17	46
2008	15	14	27	45	53	66	70	67	61	47	34	14	43
2009	8	21	31	43	56	64	63	64	60	42	38	18	42
2010	14	19	36	49	57	66	71	70	58	50	36	15	45
2011	13	18	28	41	54	65	73	68	57	49	36	27	44
2012	21	27	46	44	59	68	76	67	58	45	34	25	47
2013	16	17	22	39	56	64	68	67	60	46	31	13	42
2014	6	8	22	41	55	67	65	69	60	48	28	27	41
30-year Average	18	21	33	46	57	67	71	69	61	49	35	22	46