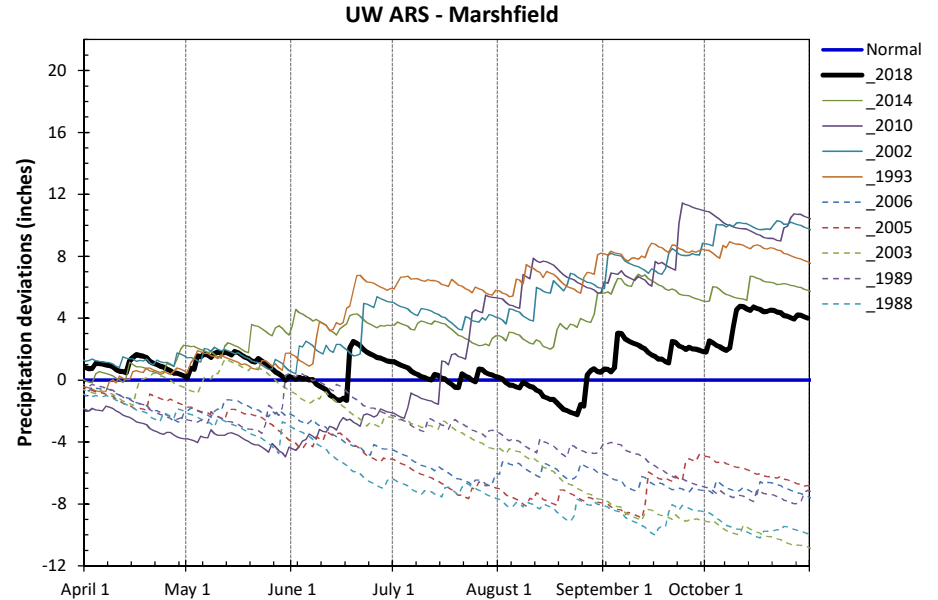
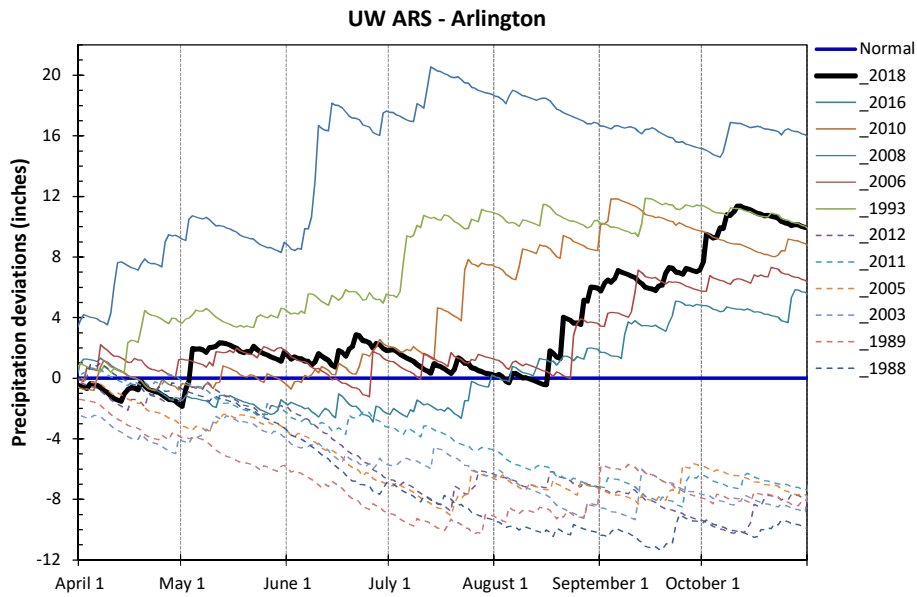
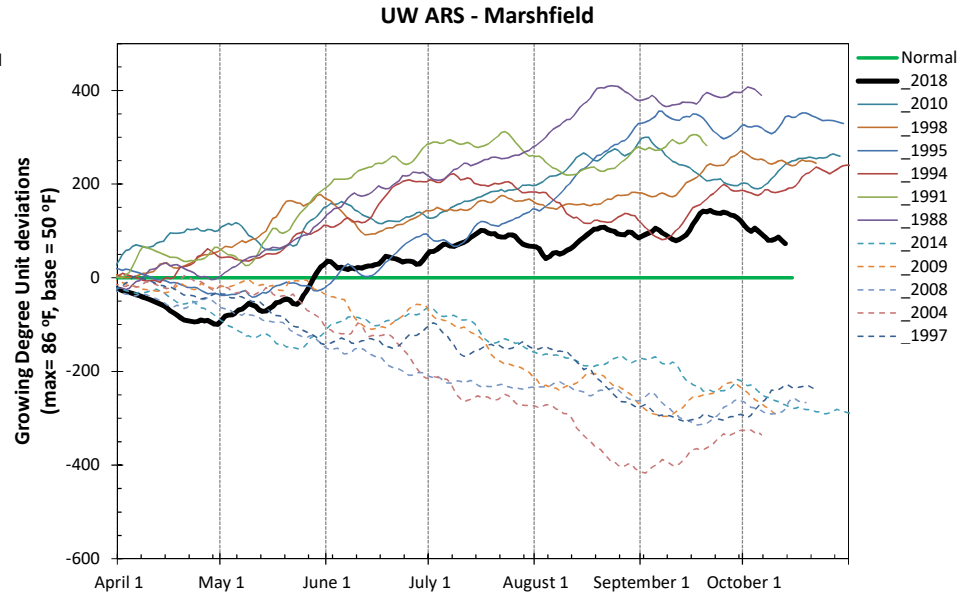
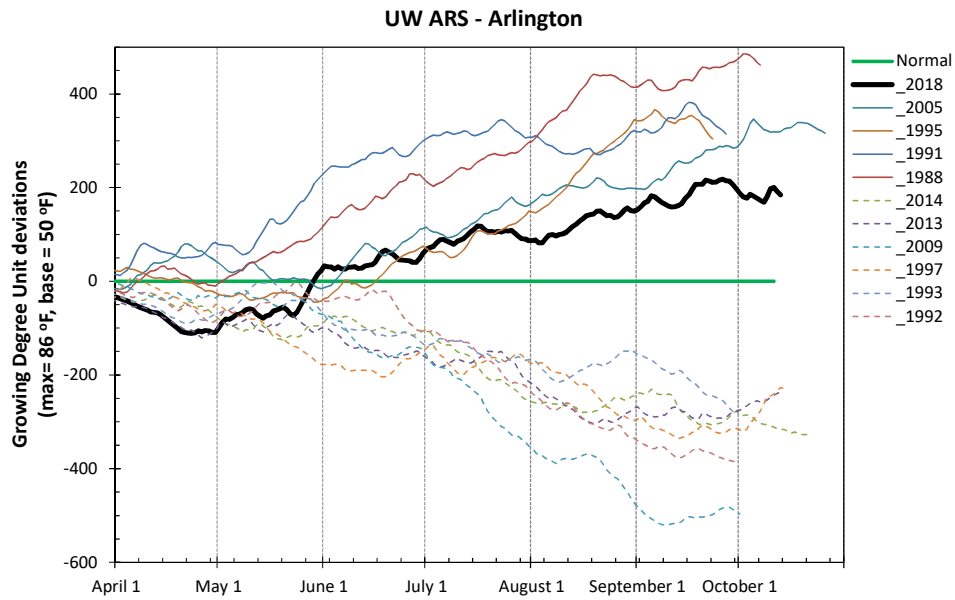


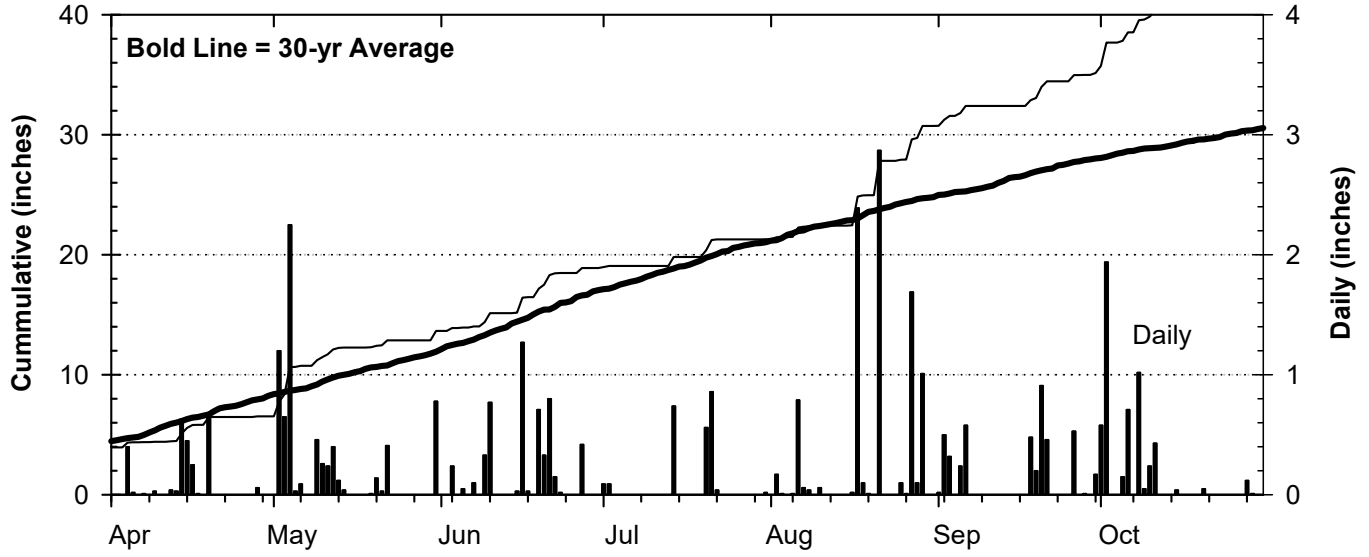
**2018 Seasonal Growing Degree Unit and Precipitation Deviations from April 1 to the fall killing frost date  $\leq 28^{\circ}\text{F}$  (or October 31).  
Years were selected using  $\pm 1$  standard deviation of the 30-year normal.**



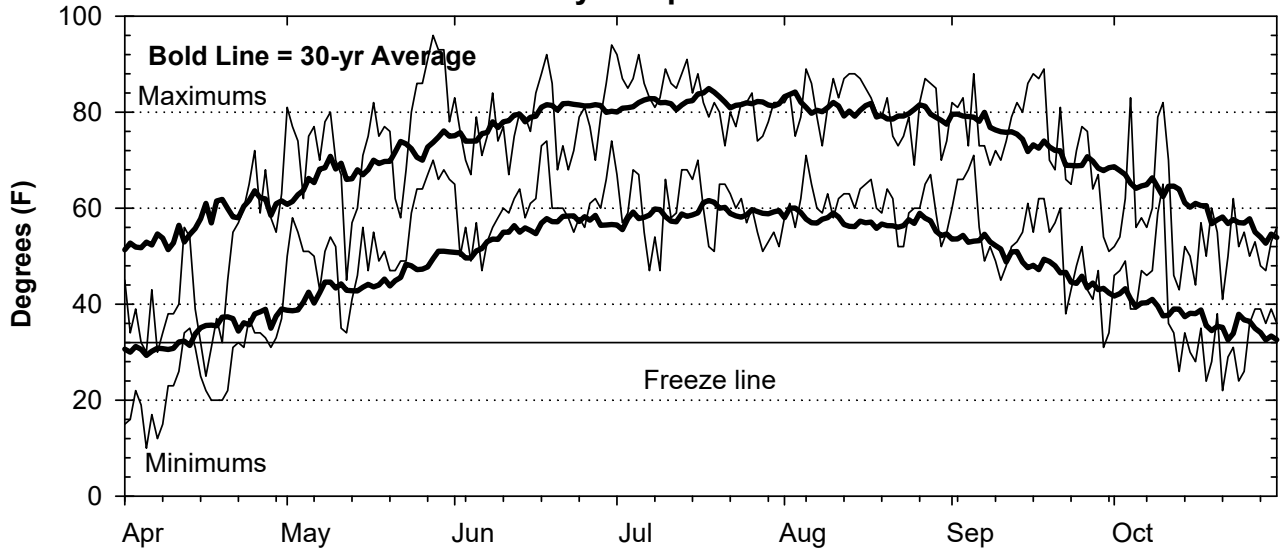
Solid lines are years that were warmer/wetter from April 1 to day of year. Dashed lines are years that were cooler/drier from April 1 to day of year.

# 2018 Weather Summary for UW ARS - Arlington, WI

## Precipitation

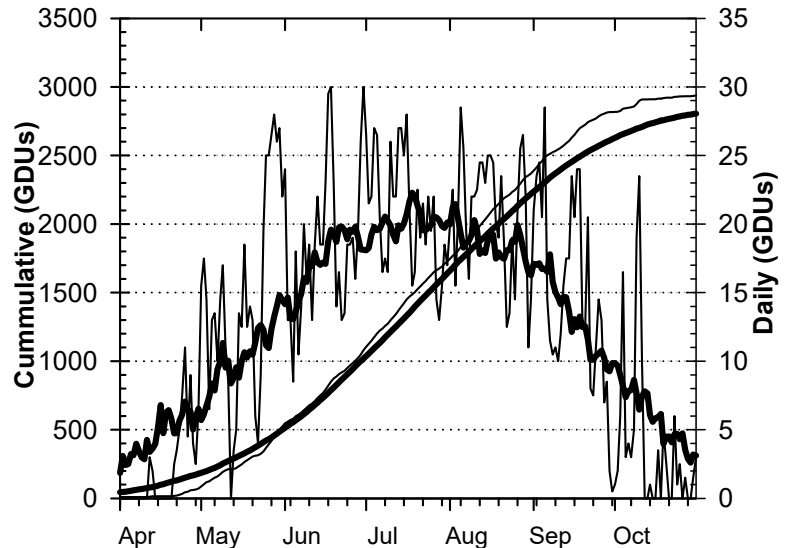
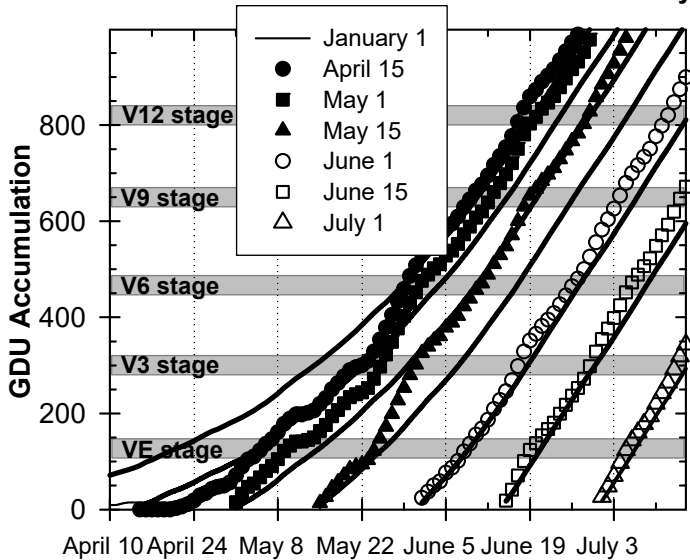


## Daily Temperatures



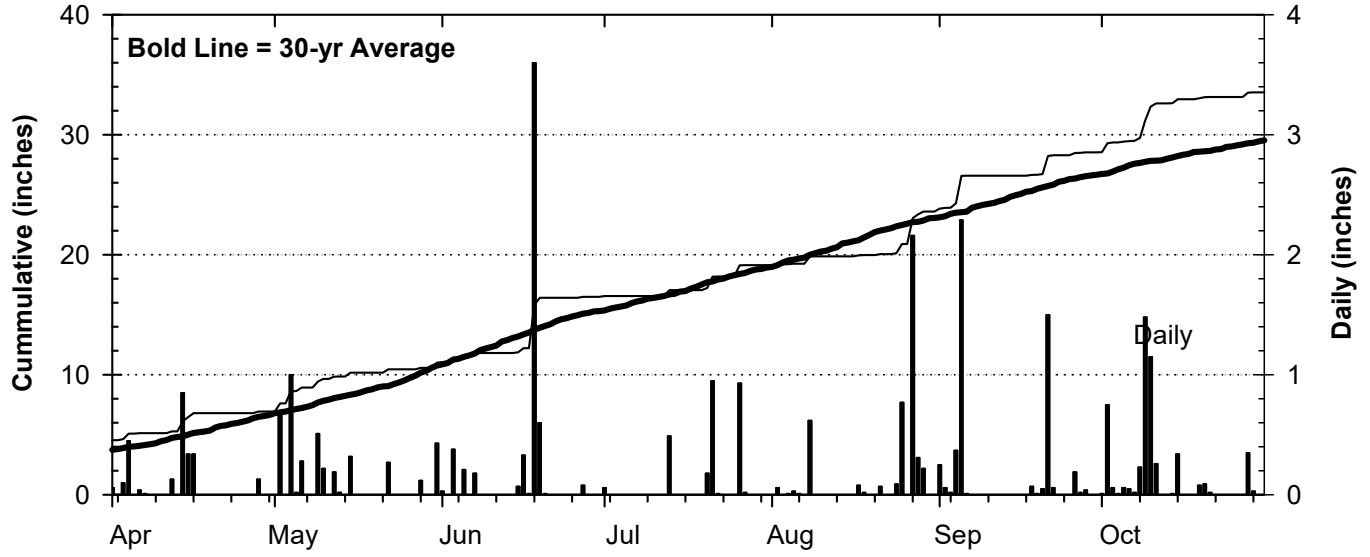
## Growing Degree Units (modified - base= 50, max = 86)

**Bold Line = 30-yr Average for each planting date**

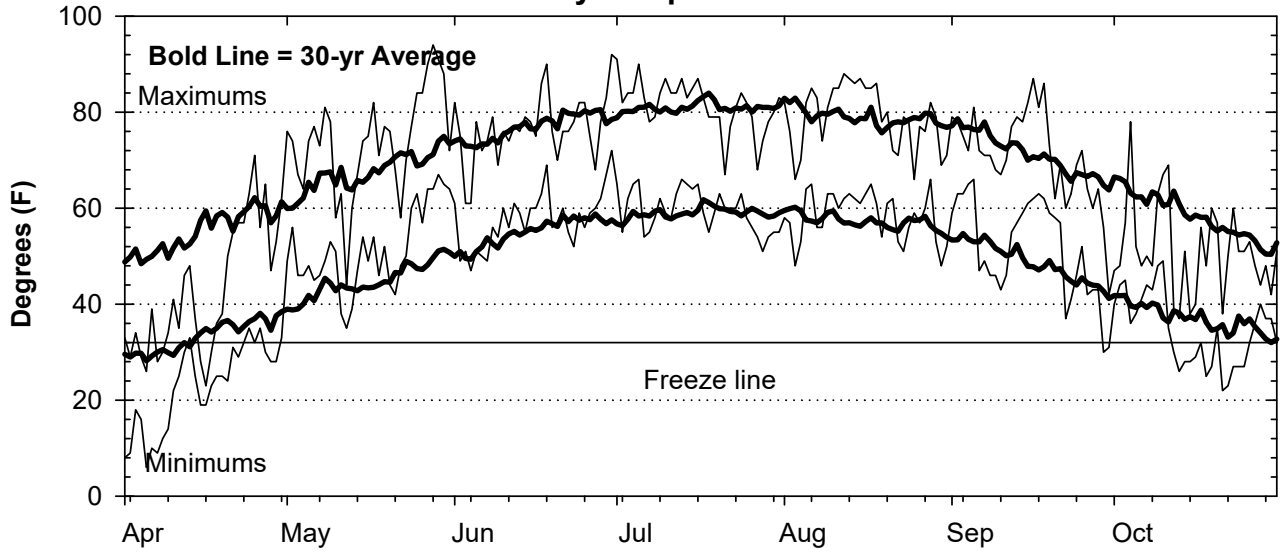


# 2018 Weather Summary for UW ARS - Marshfield, WI

## Precipitation



## Daily Temperatures



## Growing Degree Units (modified - base= 50, max = 86)

**Bold Line = 30-yr Average for each planting date**

